



## Gripto 607 | 707

### »» FOREST CRANE

The Kronos **GRIPTO 607** and **707** cranes have an uncomplicated construction with single extension boom. Yet still, they have a long reach. Gripto offers well protected hoses all the way to the rotator.

### »» FEATURES

- A geometry that is perfectly suitable for trailer mounting. Possibility for parking position on load area as well as smooth loading near the trailer.
- Protected hoses out to the rotator.
- Simple single extension construction, yet with a long reach of 7,4 meters.
- Smart Boom Control, optional (700-series).
- Lift and slewing dampers (700-series).

### GRIPTO

### 607 / 607 LP

### 707

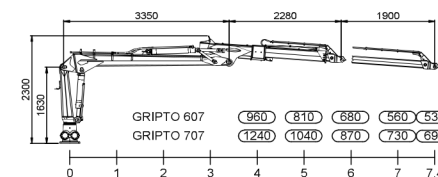
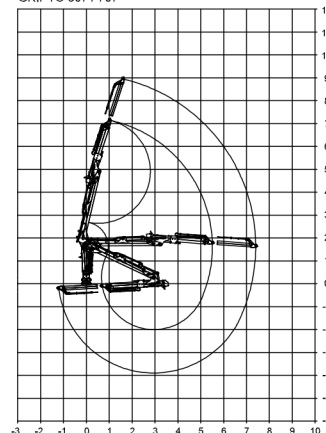
Attaching	flange	flange
Max outreach	7,4 m	7,4 m
Length of main boom	3,35 m	3,35 m
Length of extension boom	1,9 m	1,9 m
Height	1,9 m	1,9 m
Width	1,25 m	1,25 m
Lifting moment, brutto/netto (4 m)	62/38 kNm	75/49 kNm
Allowable load (without grapple and rotator)	960 kg/4m	1240 kg/4m
Turning angle of boom	380 degrees	380 degrees
Turning moment, brutto	20 kNm	20 kNm
Lubrication of turning device	oil	oil
Cylinders in turning device	4	4
Weight, basic loader	1120 kg	1140 kg
Working pressure (low pressure)	210 (185) bar	210 bar
Recommended pump output	80-120 l/min	80-120 l/min

### Recommended rotator: Indexator GV6

### Recommended grapple: Kronos 0,26

Grapple size	0,26 m <sup>2</sup>	0,26 m <sup>2</sup>
Max opening of grapple	1450 mm	1450 mm
Minimum grapple diameter	85 mm	85 mm
Width of grapple	290/340 mm	290/340 mm
Weight, grapple + rotator	190 kg	190 kg

GRIPTO 607 / 707



**COMAF**  
forestry equipment

Via dell'Artigianato, 2/4 CALVISANO (BS) ITALY  
Tel. 030 9668043 - 030 9668044 Fax 030 9968877  
www.comaf.eu e-mail: comaf@comaf.eu